



## Dynamic in Comfort and Silence

Big SUV drives around the ancient city of beautiful white walls.  
 Its quiet and elegant drive does not disturb the city's peaceful environment.  
 High performance SUV Tire that reduces noise, roughness and environmental impact.  
 The GEOLANDAR SUV is born.  
 Its silence provides a rewarding experience in comfort not only to the outside of the car but the inside too.  
 It has environmental technology with Japanese quality that enjoys a harmonious and sustainable relationship with the earth.  
 It has the potential to drive safely through roads in all conditions.  
 From now on, this premium drive is going to be the pride of the Urban-type SUV Owner.



Yokohama India Pvt. Ltd.  
 20<sup>th</sup> Floor, DLF Building No.5, Tower C, DLF Cyber City, Phase 3, Gurgaon, Haryana -122 002.  
 Ph. No.: 0124-6179700. Fax No.: 0124-6179800. customercare@yokohama-india.com.

/YokohamaIndia | www.yokohama-india.com

## Dynamic in Comfort and Silence



### AVAILABLE SIZES

Inch	Series	Size	LI/SS
15	70	205/70R15	98H
16	70	235/70R16	106H
16	65	215/65R16	98H
16	60	235/60R16	104V
17	65	235/65R17	108V
17	60	255/60R17	108H
18	60	235/60R18	107V

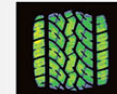
**GEOLANDAR** Pattern No. G055  
**SUV** SPEED RANGE  
V/H

**ON Road**

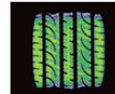


### Fuel-efficient profile that minimizes uneven wear

The profile employed suppresses tyre distortion to provide even road contact area and reduce energy loss when driving. This helps minimize uneven wear.



GEOLANDAR H/T-S



GEOLANDAR SUV

### High-rigidity profile enabling exceptional handling performance

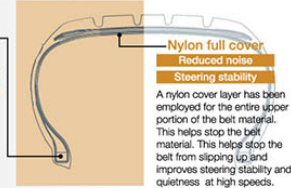
We have enhanced the strength of the sidewall rubber for tall SUV tyres and reinforced the shoulder part of the tread, which has increased the stability of the road contact area of the tyre.

The high rigidity enables superior handling and peace-of-mind at high speeds.

High-elasticity filler exclusively for the GEOLANDAR SUV brand tyre

Steering stability  
 Comfort

Employs high-elasticity filler for exceptional flexibility that meets the needs of SUV tyres with large section width.



Nylon full cover  
 Reduced noise  
 Steering stability

A nylon cover layer has been employed for the entire upper portion of the belt material. This helps stop the belt material. This helps stop the belt from slipping up and improves steering stability and quietness at high speeds.

### Orange Oil compound that provides reassuring grip in the wet

The use of a tread pattern with exceptional water drainage capability and Orange Oil compound, which makes it more difficult for the rubber to harden even at low temperatures, enable safe and secure driving on rainy days.

Tyre adhering to road surface

Standard rubber  
 Tyre surface Image

Road surface  
 Does not adhere to the minute gaps in the road surface.

nano BLEND compound

Orange Oil  
 Adhere to road surface and enhances grip performance

Zig-zag grooves

Better wet performance  
 Reduced external vehicle noise

New tyre  
 With 50% wear

Geometrically optimized sipes

Better wet performance  
 Reduced noise

4 wide straight grooves

Better wet performance  
 Aquaplaning performance

Dolphin grooves

Better wet performance

Cross supporting shoulder blocks

Better wet performance  
 Better handling performance  
 Reduced noise

### SUV Tyres Positioning Map

